



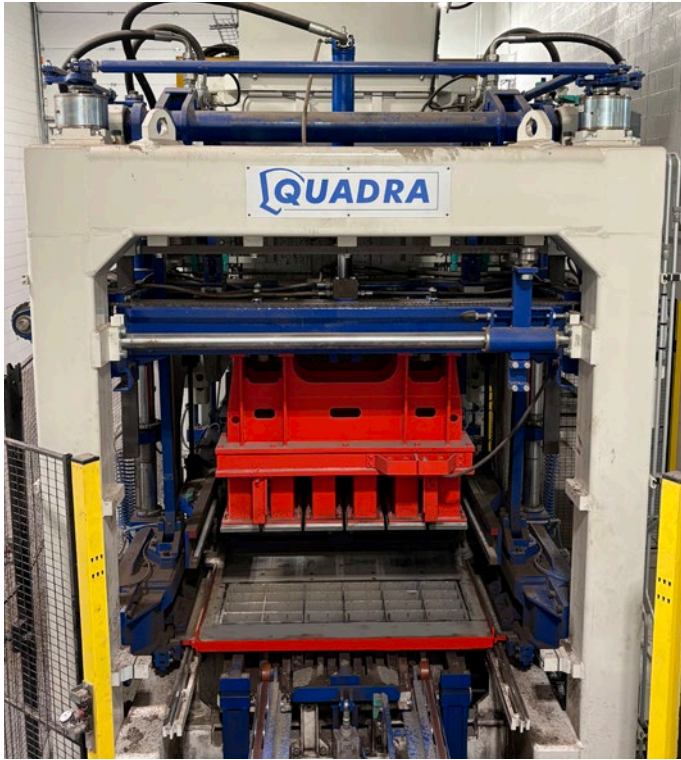
Concrete Plant International
Worldwide English Edition



4 | 2025

www.cpi-worldwide.com

ICCX SPECIAL Save the Date – ICCX Türkiye 2026 | ICCX Academy Baku 2026 **CONCRETE TECHNOLOGY** Utilizing incineration ashes **CONCRETE PRODUCTS** Innovation as a growth driver **CONCRETE PIPES AND MANHOLES** New Radial Press for manufacturing concrete pipes at Viet Cuong Concrete in Vietnam **PRECAST CONCRETE ELEMENTS** Precast carbon concrete parts from the battery mould **MIXED AND COMPACTED** Concrete – Well Done



QUADRA

Expert in block/paver machines
and robotic solutions.

www.quadra-concrete.com



Abcic
Associação Brasileira de Controladores
Industriais de Cimento

ABTC

aci
American Concrete Institute
Always advancing

ACPA
American Concrete Pipe Association

AMIB
Associação Brasileira de Manufatura
de Injeção de Betão

ASSOBETON

bibm

mpa
a member of the
World Precast Association

CERIB
Concrete Expertise

CMHA

Concrete
Europe

concretenz
LEARNED SOCIETY

IAB
INSTITUT FÜR ANGENWANDTE
BETONFORSCHUNG

ICI

OPMA
INTERNATIONAL PRECAST
MANUFACTURERS ASSOCIATION

NATIONAL PRECAST
CONCRETE ASSOCIATION AUSTRALIA

NPCC
NATIONAL PRECAST CONCRETE ASSOCIATION

PBMA
PRECAST AND BLOCKS MANUFACTURERS ASSOCIATION
of India

PCI

预利建筑网
precast.com.cn

syspro®

Quadra, 74130 Contamine-sur-Arve, France

Innovation as a growth driver

As an expert in automated processes and vibration systems, Quadra designs and builds turnkey production machines for manufacturing a wide range of concrete products such as blocks, pavers, slabs, curbs, fences, and more. Its latest-generation, innovative, and versatile equipment is sold both in France and worldwide. At **bauma 2025**, the French manufacturer presented its latest technological breakthroughs.

More Efficient and Energy-Saving Presses

Among the major innovations, Quadra unveiled two significant upgrades to its block machine. The first concerns the electrical feed box, which now replaces the former hydraulic cylinder system. This evolution, thanks to the use of a servo-motor and a chain drive system instead of articulated arms, allows for on-demand operation rather than continuous movement. The result is an estimated 15% energy saving, no more maintenance required, an accurate feed box positioning and a movement consistence. This innovation has been patented.

The second major improvement consists in replacing the hydraulic aggregate unit by a servo-controlled unit. A dedicated servo pump adjusts the pressure and debit to the need in the cycle for each movement. Proportional valves are then useless and are replaced by on/off valves. These parts are much more reliable. A PLC is synchronising all the components, the architecture is more simple thus reliable and less affected by the consequences of oil pollution. The measured energy saving is by 20% compared to the previous generation.

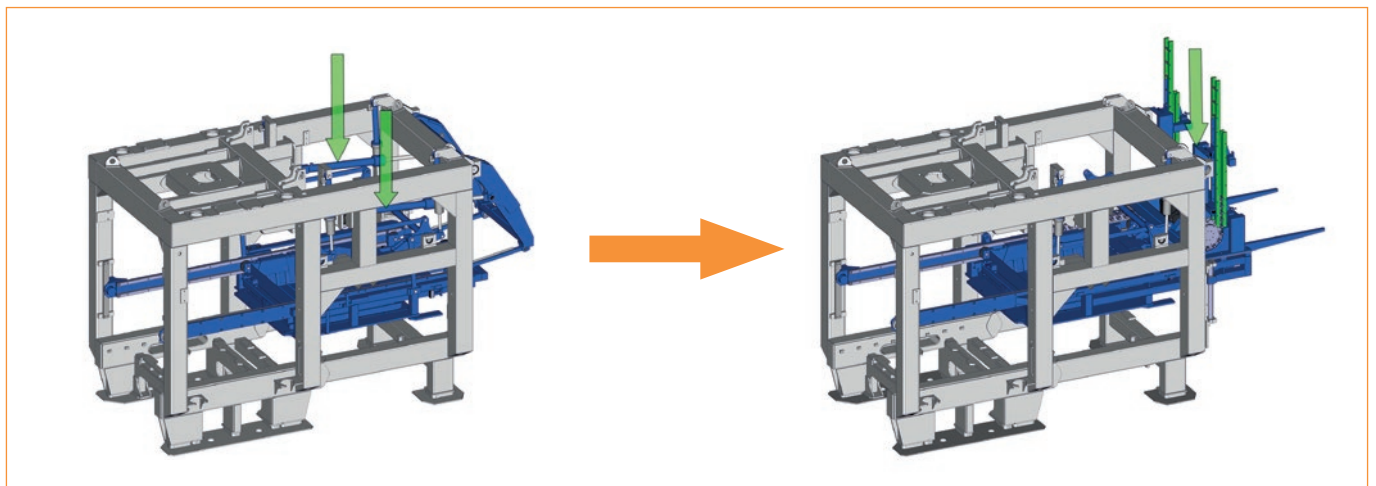
Connected Services for Operators

Quadra's innovation also extends beyond mechanics, integrating smart solutions to enhance machine operation, training, and maintenance. For instance, a Chat Bot has been developed to assist operators with real-time diagnostics and troubleshooting. This is complemented by an online machine learning module that enables automatic correction of production parameters.

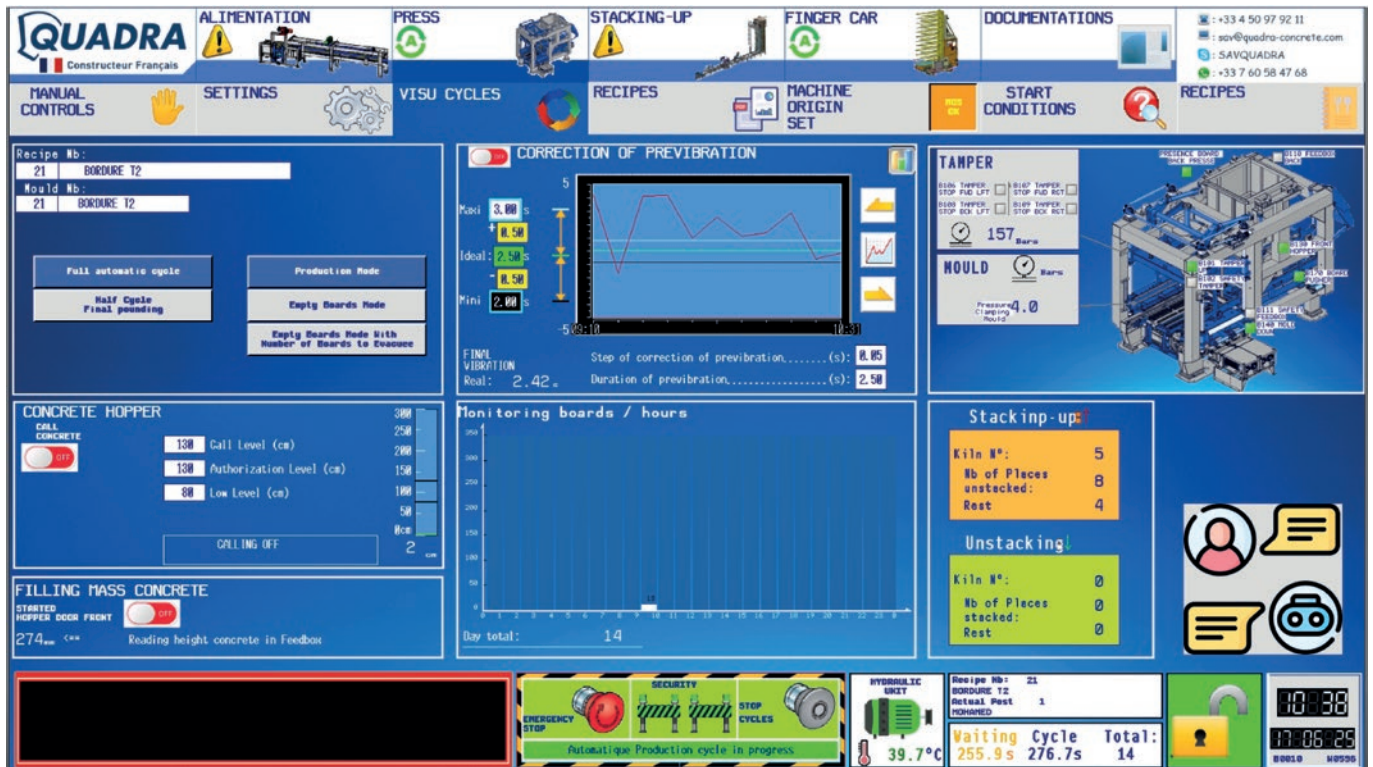
In addition, a real-time vibration monitoring system has been implemented. It provides alerts at two thresholds:

- Level 1: a warning message appears on the main control panel.
- Level 2: the press automatically adjusts its settings if the defect occurs twice in a row, thereby preventing potential damage.

Another evolution is Quadra 4.0 "enhanced" customer service which allows them to have real-time access to their equipment and all production parameters. Whether remotely or on-site, they can view and respond to the current performance of their block machine, analyse the causes of downtime in details, and compare their production parameters with different moulds. This system greatly facilitates exchanges between operators and technicians, enabling rapid response to operator requests and effective assistance during adjustment or troubleshooting operations.



A servo motor and a chain drive system instead of articulated arms.



A Chat Bot to assist operators with real-time diagnostics and troubleshooting.



French Manufacturer of Automated Equipment for the Concrete Industry

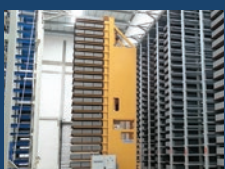
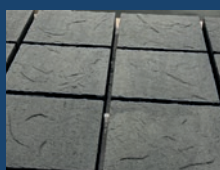
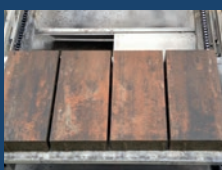
TURN-KEY PLANTS

«HIGH PERFORMANCE» vibrating presses
STATE-OF-THE-ART handling systems
TAILOR-MADE robotic solutions



EFFICIENCY, VERSATILITY & INNOVATION

www.quadra-concrete.com



QUADRA
40 route de Findrol
74130 Contamine-sur-Arve
France
Tel. +33 4 50 03 92 21



Expo CIHAC
Mexico city, Mexico
15-17 October 2025

ICCX North Africa
Casablanca, Morocco
29-30 October 2025



Real-time vibration monitoring system.

Customers may also have access to an online collaborative platform. User-friendly, interactive and intuitive, it enables them to transmit their requests quickly and easily (information requests, incident reports and quotation requests). They can also access their spare parts catalogue, download technical documentation for their equipment, as well as operating instructions and animated tutorials.

At last, to facilitate on-site intervention, Quadra now offers WiFi-connected touchscreen tablets. These tablets mirror the main control screen, allowing operators to adjust settings directly in front of the machine, enhancing both efficiency and precision.

100% Quadra Expertise

All these innovations are the result of the work carried out by Quadra's teams based in France. Divided into specialized design offices - mechanical, electrical, hydraulic, automation, and robotics - around sixty engineers and technicians collaborate to develop ever-more-efficient solutions focused on productivity, new construction systems, energy savings, and operational ease.



WiFi-connected touchscreen tablets to adjust settings directly in front of the machine.

FURTHER INFORMATION



Quadra
40, route de Findrol
74130 Contamine-sur-Arve, France
T +33 450039221
info@quadra-concrete.com
www.quadra-concrete.com